

DATE: January 28, 2026

TO: Emily Brickman, P.G., *Senior Project Manager – Geologist, EnSafe*

FROM: Caleb Gourley, *Senior Staff Scientist, Harbor*

RE: Bi-weekly Site Inspection
NABORS Landfill
Mountain Home, AR
Harbor Project No: L8247885

Harbor conducted the bi-weekly site visit at the NABORS landfill in Mountain Home, Arkansas on January 12, 2026, to assess the general condition of the landfill and the leachate collection system (LCS). The LCS was last fully repaired by Advanced Fluid Technologies (AFT) in October and November of 2022; however, within a few weeks of these repairs, the LCS began malfunctioning. By March 2023, most of the LCS points were malfunctioning. A quote was then requested and received from AFT to repair the system again. No authorization for the subsequent repairs was provided prior to the expiration of Harbor's contract with DEQ in June 2023.

Landmarc Environmental (Landmarc), a company specializing in LCS installation and service, conducted a full assessment of the LCS on December 3-4, 2024. A report summarizing these activities was submitted on January 20, 2025. Harbor discontinued site visits in February 2025 until DEQ approved a new budget for activities occurring at NABORS. The budget was approved on April 3, 2025, and site visits will continue until 2026.

EnSafe submitted a Scope of Services and Fee Estimate (Revision 1) to the Arkansas Department of Energy and Environment Division of Environmental Quality (DEQ) Office of Land Resources on February 28, 2025, which included proposals from Harbor and Landmarc to complete repairs to the LCS. On July 10, 2025, the DEQ approved EnSafe's Scope of Services and Fee Estimate for LCS repairs, which were conducted on September 2-5, 2025. The LCS system was partially repaired, which included installation of 30-amp power disconnects and new PD6000 controllers. Harbor received a report from Landmarc on October 13, 2025, which was included with a report summarizing repairs prepared by Harbor and submitted on October 24, 2025. In January 2026, EnSafe and Harbor submitted two different proposals to DEQ for approval: Leachate Collection Systems Repairs – Operation and Maintenance NABORS Landfill – 2026, dated January 14, 2026, and Operation and Maintenance NABORS Landfill – 2026, dated January 16, 2026.

EnSafe and Harbor are currently awaiting approval of the scope of services submitted in January 2026.

Findings and observations from the current landfill inspection are summarized below:

- Vertical leachate collection sump (VLCS)-1 was not functioning correctly, and the sump was observed at capacity and overflowing (see photographs 1-2).
-

- VLCS-2 appeared to be functioning correctly and was observed at 1/2 capacity.
 - The leachate tank battery level was 86.3 inches.
 - Minimal stormwater was observed in the leachate tank containment. As such, no stormwater was released from the containment (see photograph 3).
 - LCS-1 displayed a leachate level of 36.8 inches. The sump did not activate in "hand" or "auto" and appears to not be functioning correctly.
 - LCS-2 displayed a leachate level of 18.6 inches. The station appeared to be operating in both "hand" and "auto" modes.
 - LCS-3 displayed a leachate level of 30.1 inches. The station appeared to be operating; however, the "hand" and "auto" modes did not affect the sump, and the leachate level did not change over time.
 - LCS-4 displayed a leachate level of 20.7 inches. The station appeared to be operating in both "hand" and "auto" modes. The wooden end cap on the sump housing had been removed and wire trace pulled out of the sump housing. The wire trace was tucked back inside the housing and wood cap was replaced (see photograph 4).
 - LCS-5 displayed a leachate level of 543.3 inches. Landmarc stated that the sump pump is more than likely faulty, causing voltage issues within the VFD. The station is not functioning correctly and will need additional repairs.
 - LCS-6 displayed a leachate level of 651.0 inches. The station did not appear to be functioning correctly.
 - LCS-7, LCS-8, and LCS-9 remain non-operational. Landmarc has submitted a proposal to complete repairs.
 - An erosional washout is present along the road between LCS-4 and LCS-5.
 - Two damaged pressure relief vents (PRV-1 and PRV-2) were observed on the west side of Area 1-2, between LCS-1 and LCS-2. The damage is located near coordinates 36.46144, -92.45128.
 - Damaged closure turf (DCT-1) was observed on the north side of Area 1-2 at coordinates 36.46181, -92.45045. The damage is approximately 30 feet long by 3 feet wide. The damage was first observed on July 2, 2025. An additional crack has developed, spurring off the original, that extends approximately 20 feet (see photographs 5-6).
 - Additional closure turf damage (DCT-2) was observed on the north side of Area 1-2 near coordinates 36.461453, -92.450493. The damage consists of several areas where closure turf patches have failed or are beginning to fail (see photographs 7-8).
 - Additional closure turf damage (DCT-3) was observed on the south side of Area 1-2 near coordinates 36.460177, -92.450569, above LCS-2 (see photographs 9-10).
 - Damaged closure turf (DCT-4) was observed on the east side of Area 1-3, above LCS-7. The damage is approximately 100 feet long by 9 feet wide near coordinates 36.459656, -92.445638. The closure turf tear was first observed on June 17, 2025 (see photograph 11).
-

Attachment A is a map showing the LCS points. Photographs are included in Attachment B. Copies of the field notes and the LCS status form are included in Attachment C.

The LCS functionality has improved significantly since Landmarc made their recent repairs. 417 Services began hauling leachate on July 2, 2024. From July 2, 2024, through February 23, 2025, 226 loads of leachate (866,700 gallons) was hauled to the City of Springfield, Missouri wastewater treatment plant under wastewater contribution permit #593.

No leachate was hauled between February 24, 2025, and April 10, 2025. 417 Services resumed hauling leachate on April 11, 2025. As of October 17, 2025, 180 loads of leachate (693,000 gallons) have been hauled to the City of Springfield for disposal. Leachate hauling has been paused since October 17, 2025, until more funds become available.

Attachments:

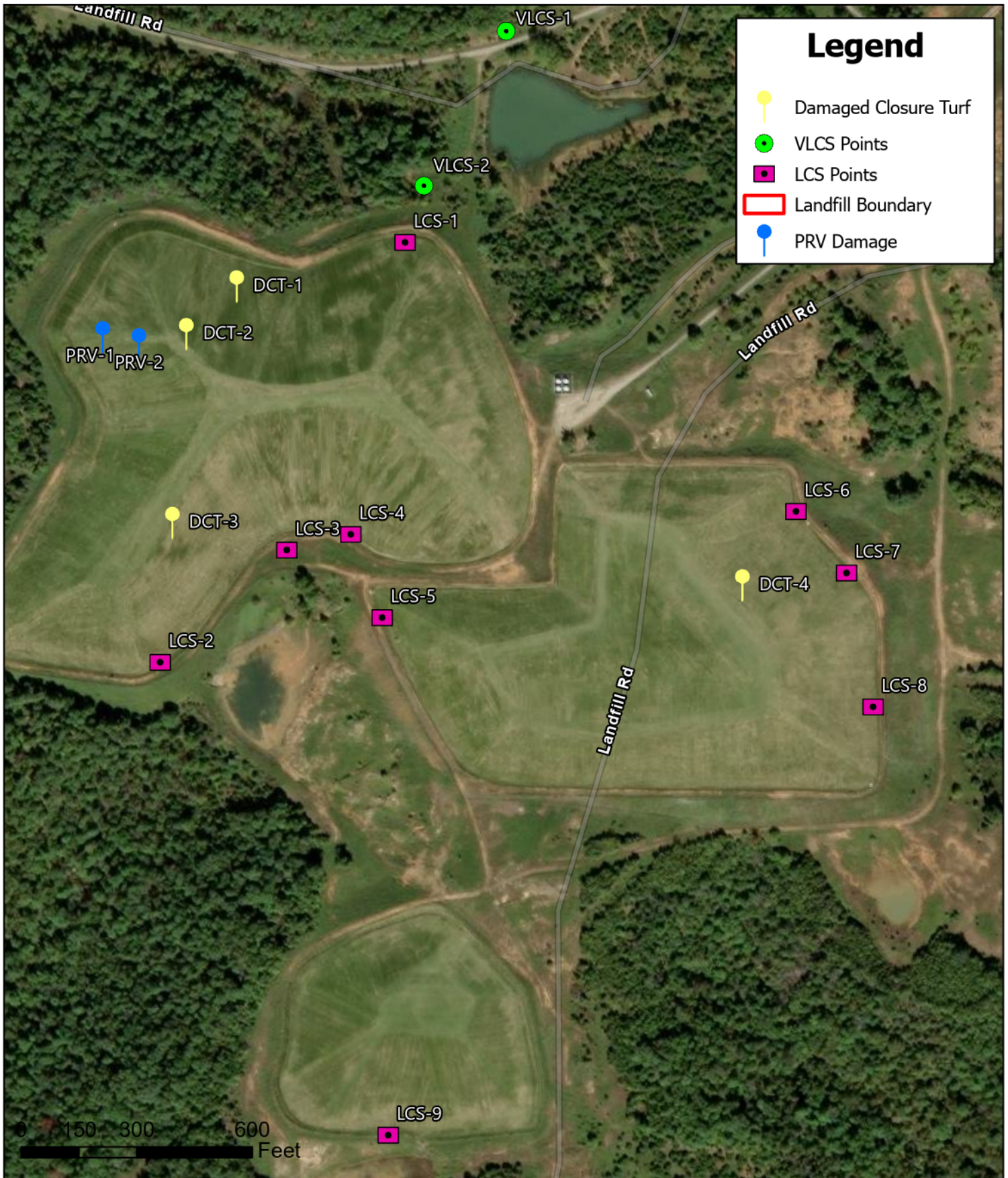
Attachment A – Site Map

Attachment B – Site Photographs

Attachment C – Field Notes and Leachate Collection System Status Form

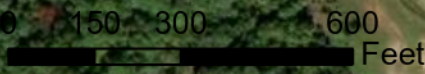
Attachment A

Site Map



Legend

- Damaged Closure Turf
- VLCS Points
- LCS Points
- Landfill Boundary
- PRV Damage



Harbor
 A Terracon Company
 5800 Evergreen Drive
 Little Rock, AR 72205
 P: 501.663.8800
 www.HarborEnv.com

Client:
ENSAFE



Site Location Map
 NABORS Landfill
 Three Brothers, Baxter County, AR
 Date: 1/26/2026
 Drawn by: CG
 Checked by: TH
 Revision No: 0

Attachment B
Site Photographs



Photograph 1: View of VLCS-1 overflowing.



Photograph 2: View of VLCS-1 at capacity.



Photograph 3: View of minimal stormwater in leachate tank containment.



Photograph 4: View of wire trace and wooden cover removed from LCS-4 sump housing.



Photograph 5: View of DCT-1 on north side of Area 1-2, at 36.46181, -92.45045.



Photograph 6: View of additional damage related to DTC-1 on north side of Area 1-2.



Photograph 7: View of DCT-2 on top of north side of Area 1-2, near 36.461453, -92.450493.



Photograph 8: View of DCT-2 on top of north side of Area 1-2, near 36.461453, -92.450493.



Photograph 9: View of DCT-3 on south side of Area 1-2, above LCS-2 near 36.460177, -92.450569.



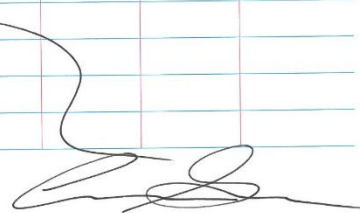
Photograph 10: View of DCT-3 on south side of Area 1-2, above LCS-2 near 36.460177, -92.450569.




Photograph 11: View of DCT-4 on east side of Area 1-3, above LCS-7 near 36.459656, -92.445638.

Attachment C

**Field Notes and Leachate Collection System
Status Inspection Form**

Nabors Landfill		1/2/25
Leachate Management		
weather: 40's, overcast, light rain		
957:	C. Gowby on-site	
1000:	Arrive at VLCS-2	
1002:	Arrive at VLCS-1	
1005:	Arrive at leachate tank battery	
	- tank level @ 86.4"	
	- min. sw in cont.	
	- someone has dumped trash near containment	
1015:	Arrive at LCS-1	
1018:	Arrive at LCS-2	
1020:	Arrive at LCS-3	
1022:	Arrive at LCS-4	
1027:	Arrive at LCS-5	
1032:	Arrive at LCS-9	
1037:	Arrive at LCS-8	
1040:	Arrive at LCS-7	
1042:	Arrive at LCS-6	
1050:	C. Gowby off-site	
		

Nabors Landfill		1/2/25
Leachate Management		
weather: 50's, clear, light breeze		
1040:	C. Gowby + Z. white on-site	
1047:	Arrive at VLCS-2	
1050:	Arrive at VLCS-1	
1055:	Arrive at leachate tank cont.	
	- minimal sw	
	- tank level @ 86.2"	
1100:	Arrive at LCS-1	
	- multiple areas of damage Area 1-2	
1118:	Arrive at LCS-2	
1120:	Arrive at LCS-3	
	- power disconnected	
1124:	Arrive at LCS-4	
1127:	Arrive at LCS-5	
1132:	Arrive at LCS-9	
1137:	Arrive at LCS-8	
1138:	Arrive at LCS-7	
1145:	Arrive at LCS-6	
1155:	C. Gowby + Z. white off-site	
		



Leachate Collection System Status

Date: 1/12/25 Arrival Time: 1040 Location: NABORS Landfill Leachate Tank Battery Level (inches): 86.3
 Weather Conditions: Sols, clear, light breeze

Panel Number	Display Functioning (Yes/No)	Leachate Level (inches)	Green Flashing? (Yes/No)	Amber Flashing? (Yes/No)	Red Flashing? (Yes/No)	Working in Hand? (Yes/No)	Working in Auto? (Yes/No)	VFD Operational? (Yes/No)	Comments
VLCS-1	N/A	N/A	N/A	N/A	✓	Y	Y	N/A	Sump Capacity: 1/2 capacity
VLCS-2	N/A	N/A	N/A	N/A	✓	✓	✓	N/A	Sump Capacity: at capacity
LCS-1	Y	36.8	✓	✓	✓	✓	✓	—	station not operational
LCS-2	Y	18.6	✓	✓	✓	Y	Y	✓	station ok
LCS-3	Y	30.1	✓	✓	✓	✓	✓	—	VFD active, pump not operational
LCS-4	Y	20.7	✓	✓	✓	Y	Y	—	station ok
LCS-5	Y	543.3	✓	✓	✓	✓	✓	—	station not operational
LCS-6	Y	651.0	✓	✓	✓	✓	✓	—	" "
LCS-7	✓	—	—	—	—	—	—	—	" "
LCS-8	✓	—	—	—	—	—	—	—	" "
LCS-9	✓	—	—	—	—	—	—	—	" "
General Comments:									

End of Report
